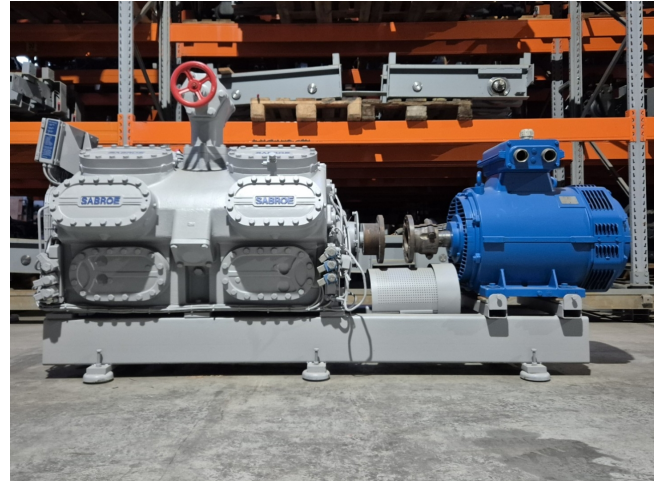


# Sabroe SMC 116 S LP (Overhauled)

## Specifications

|                     |   |
|---------------------|---|
| Brand               | Sabroe                                  |
| Type                | SMC 116 S LP<br>(Overhauled)            |
| Refrigerant         | Freon                                   |
| kW at -30°C/+40°C   | 155,7                                   |
| kW at -40°C/+40°C   | 71,0                                    |
| kW at -45°C/+40°C   | 41,5                                    |
| Electromotor Specs  | 50/60 Hz - 90/103 kW -<br>1470/1770 RPM |
| Unloaded Start      | ✓                                       |
| Capacity Control    | ✓                                       |
| On steel base frame | ✓                                       |
| Sight Glass         | ✓                                       |
| Solenoid Valve      | ✓                                       |
| Control panel       | ✓                                       |
| m3 / h              | 882                                     |
| Sizes               | 2680x1000x1370 mm<br>(LxWxH)            |
| Stock               | 1                                       |



## Description

### Used Sabroe SMC 116 S LP (Overhauled)

Overhauled Sabroe SMC 116 S LP reciprocating compressor on Freon. Complete with a Schorch KN7250M-BB014-152 electric motor - 50/60 Hz - 90/103 kW - 1470/1770 RPM and an Unisab RT-Control. The compressor has a displacement of 882 m<sup>3</sup>/h at 1460 RPM.

\*Why choose for HOSBV? Were not only the largest used refrigeration specialist in Europe, but also, we deliver all equipment including an extensive test, warranty and industrial cleaning.

\*Optional we can also perform a new paint job and arrange the logistics.

